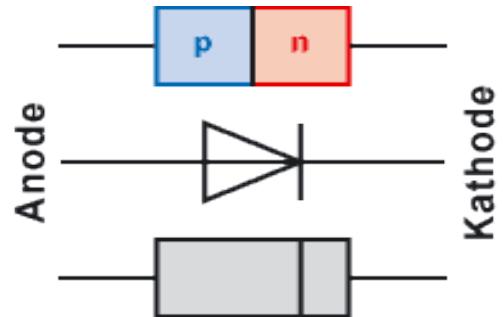
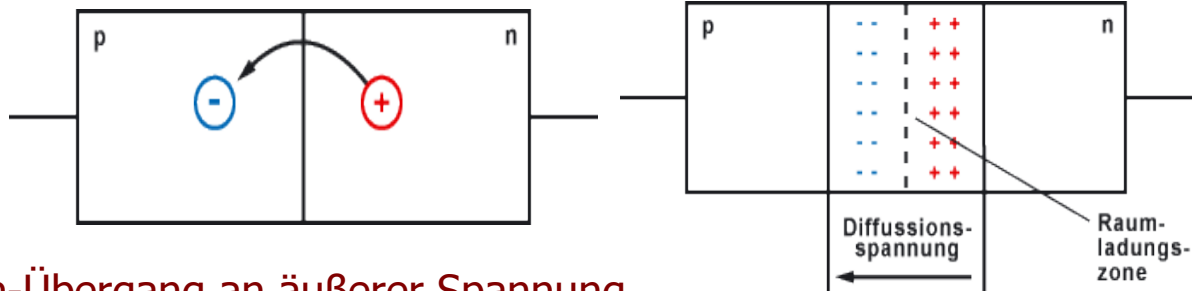


# pn-Übergang & Transistor

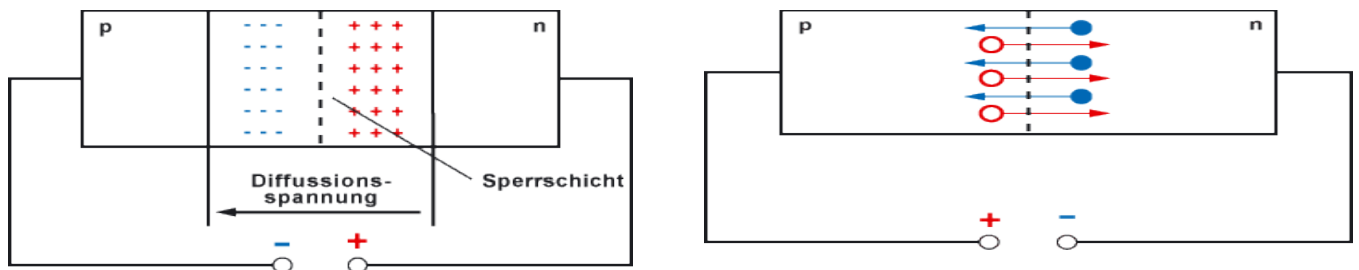
## pn-Übergang



## pn-Übergang ohne äußere Spannung



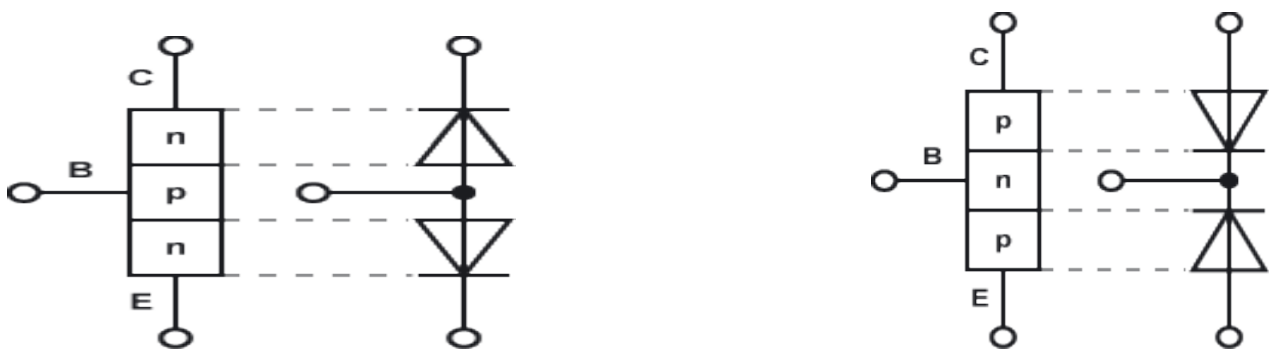
## pn-Übergang an äußerer Spannung

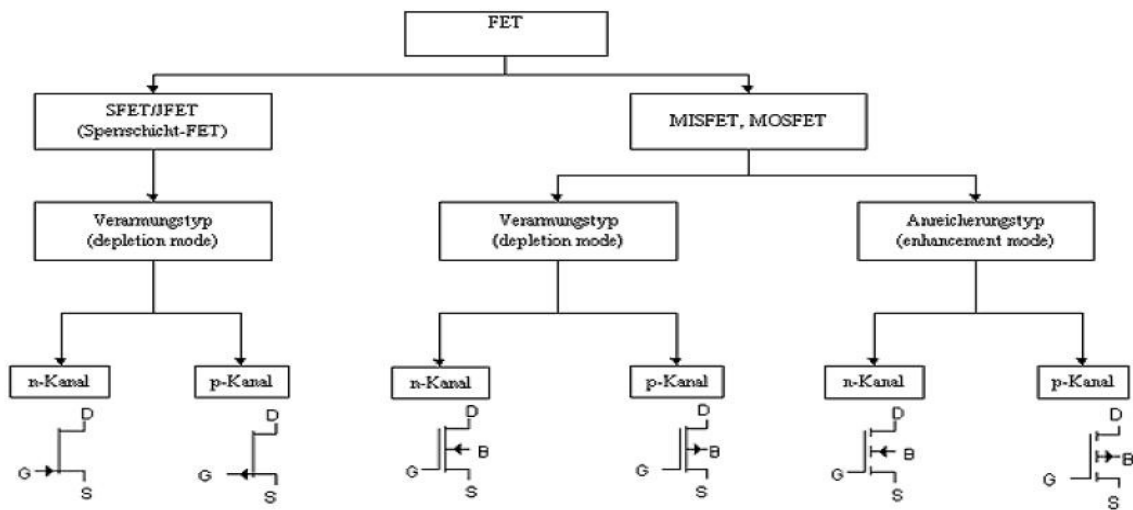


## Was ist ein Transistor

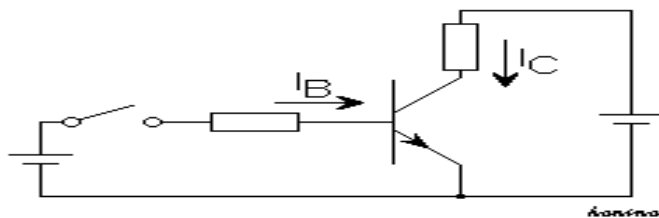
- ein elektronisches Halbleiterbauelement
- verwendet zum Schalten und Verstärken

## Typen

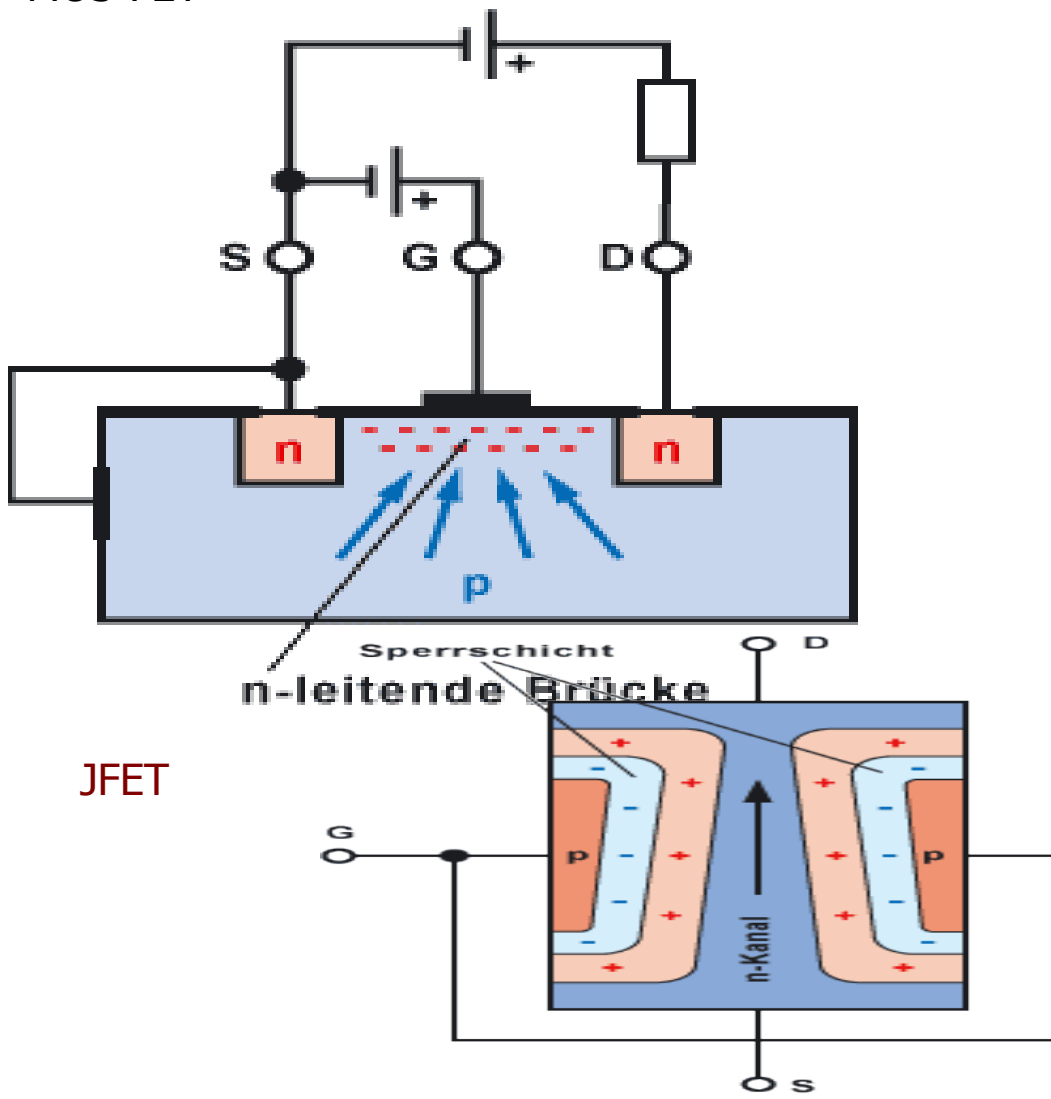




## Funktionsweise des Bipolartransistors



## ■ MOS-FET



## JFET