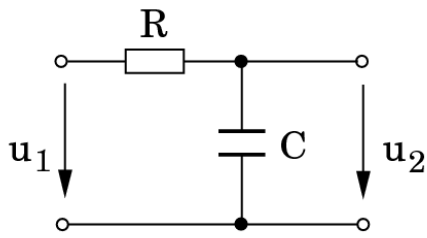


Filter

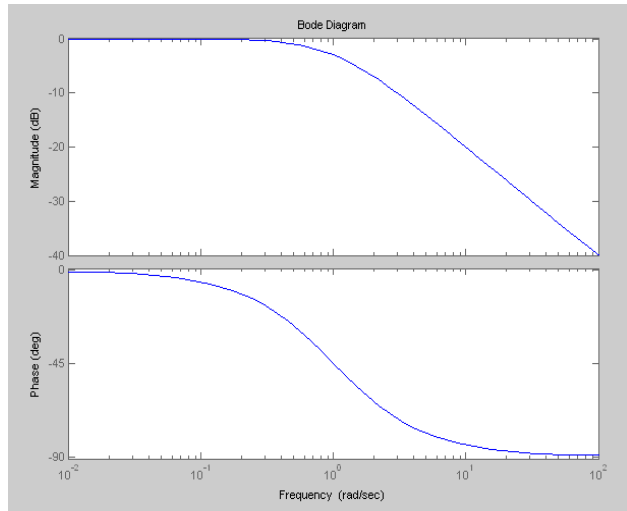
-Matthias Albrecht – 8.11.06-

Tiefpass

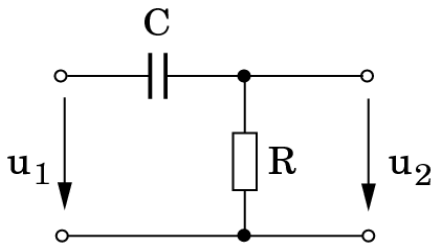


$$H = \frac{u_2}{u_1} = \frac{1}{1 + j \omega RC}$$

$$\omega_g = \frac{1}{RC}$$

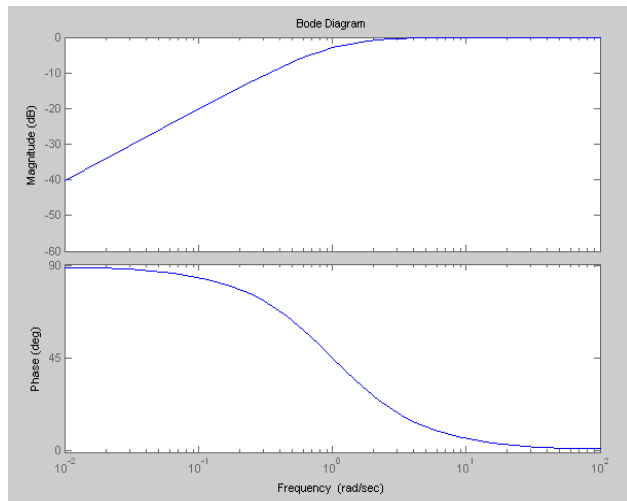


Hochpass

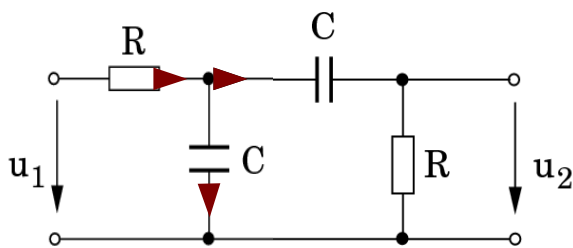


$$H = \frac{u_2}{u_1} = \frac{j \omega RC}{1 + j \omega RC}$$

$$\omega_g = \frac{1}{RC}$$



Bandpass



$$H = \frac{H_{TP}}{H_{HP}} = \frac{j \omega RC}{1 + 2j \omega RC - \omega^2 (RC)^2}$$

$$\omega_g = \frac{1}{RC}$$

